



WALT DISNEY WORLD  
**VACATION TIPS**  
Prepared exclusively for:

Compliments of:



and your travel agent:



[www.DestinationMagic.com](http://www.DestinationMagic.com)



YOU'RE GOING TO  
**Disney!**



# ITINERARY

## ACCOMMODATIONS

Resort Name:	Resort Address:	<b>ARRIVING EARLY?</b> All resorts will hold your bags for you so you can enjoy the parks before you check-in or after you check-out.
Room Type:		
Confirmation Number:	Arrival Date:	Departure Date:
Number Of Nights:	Check-In Time:	Check-Out Time:

## AIRPORT TRANSFERS

Shuttle  Private  
Provider:



## RENTAL CAR

Company Name: Reservation Number:

## THEME PARK TICKETS

Ticket Type: <input type="checkbox"/> 1 Park Per Day <input type="checkbox"/> Park Hopper <input type="checkbox"/> Park Hopper Plus*	Number of Days:	*Number of "Plus" Options:
	Date of First Use:	Last Date of Use:

## DINING PLAN

 Total <b>Quick Service</b> Meal Credits	 Total <b>Table Service</b> Meal Credits	 Total <b>Snack</b> Credits
--	---	--

## SPECIAL EVENT TICKETS

Special Event:

Event Date:	Event Hours:	Early Entry Time:
-------------	--------------	-------------------

## VIP TOURS, ACTIVITIES, OR RECREATION

Activity:	Location:	Confirmation Number:
Date:	Start Time:	Duration:

## OTHER PARK/ATTRACTION TICKETS (UNIVERSAL, SEA WORLD, ETC.)

Park/Attraction:

Ticket Type:	Hours:	Confirmation Number:
--------------	--------	----------------------



# MAGIC AT THE MOMENT

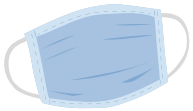
## COVID-19 HEALTH AND SAFETY

**Get excited!** You are about to visit the Walt Disney World Resort during an amazing time in history. Never before have guests enjoyed a Disney experience quite like the one available right now. While it will be different in many ways, that doesn't mean it will be "less than". In fact, there are some incredible positives that make going right now, worth every penny!

To stay up to date with the latest procedures, offerings and experiences, go to Disney's informational website, **Know Before You Go**. (<https://disneyworld.disney.go.com/experience-updates/>) Information is constantly being updated as the situation changes. That said, there are key points I want to be sure you are 100% clear on up front.

**1.** A resort reservation with theme park tickets does not guarantee you entry into the theme parks. Right now, guests are required to make a **Park Pass** (a reservation) for each day they plan to visit a park. **Park-hopping** is permitted after 2:00 PM. You do not need a Park Pass for a park you want to hop to.

**2.** Indoor **face covering** requirements vary based on CDC recommendations and local guidelines. Read *Disney's Know Before You Go* page for the most current policies and information.



**3.** Using the **My Disney Experience App** is strongly encouraged. In an attempt to limit personal interaction and unnecessary contact, Disney is urging you to use **online check-in, mobile food ordering** and viewing digital menus—all via the app. Be sure to download the FREE My Disney Experience app to your device.



**4.** **Contactless payments** are strongly encouraged. Disney is recommending that you add a form of payment to your My Disney Experience account and use **Mobile Magic** or your MagicBand as your method of payment for all purchases include food and souvenirs. Debit cards, credit cards, Disney gift cards are also recommended over cash.

**5.** Some of our favorite experiences are temporarily paused. Parades, character meet and greets and some playground areas throughout the entire resort are not currently operational due to the need for **social distancing**. But there are some character sightings and spontaneous mini-parades called Cavalcades.



**6.** **PhotoPass Photographers** can no longer take pictures with your camera or device. Adding the **Memory Maker** to your reservation will allow everyone to get into the shots.

**7.** **Complimentary transportation** is still provided, however, capacity on Disney bus, monorail and Skyliner transportation may be limited. Expect transportation delays. Self-parking is available, valet parking is not. If you drive to the parks, the trams may not be operational, so you may have a long walk between your car and the park entrance.

**8.** **Housekeeping** will not be provided daily. Rooms are thoroughly cleaned prior to check in and high touch items are wiped and bagged. Light cleaning is done very other day which includes removal & replacing of towels and amenities. Counter/surfaces wiped and trash is removed. Need anything else...call housekeeping from your room phone.



That may seem like a lot of restrictions and it's only the highlights, so please review the Know Before You Go website for the most current information. It is constantly evolving.



# MAGIC BANDS, MAGIC MOBILE, & KEY TO THE WORLD CARDS

## FEATURES AND BENEFITS

### What is a Magic Band?

They are high tech, waterproof wrist bands that come in many colors and designs. They are available to Disney resort guests for advance purchase at a discounted price through the My Disney Experience account. (If you are not a Disney resort guest, you will need to link a credit card to your My Disney Experience account to use the bands).



*Order your personalized Magic Bands through My Disney Experience 30 days or more before check-in. They will either be shipped to your or be waiting at your Disney resort hotel front desk when you arrive. You can also purchase them on site at Walt Disney World but they are not able to be personalized.*

### What is a Magic Mobile?

It is a feature that is part of the My Disney Experience app. It offers similar features to a Magic Band but works on your smartphone or Apple watch. (All guests will need to link a credit card to your My Disney Experience account to use Magic Mobile features for mobile ordering and merchandise purchases.



*Tip: Bring a portable battery charger with you to be sure your phone is charged when you need it.*



### What is a Key to the World card?

It that resembles a credit card and has many of the same features of Magic Bands. They are provided free of charge at your Disney resort hotel.

	Magic Bands	Magic Mobile	Key to the World
Mobile resort check in		x	
Unlock the door of your Disney Resort hotel room	x	x	X
Enter theme and water parks (with valid admission)	x	x	x
Connect Disney PhotoPass images to your account	x	x	x
Charge food and merchandise purchases to your Disney Resort hotel	x		x
Charge food and merchandise purchases to your linked credit card		x	
Mobile order from Disney dining locations		x	
Price	\$5-20+	Free	Free



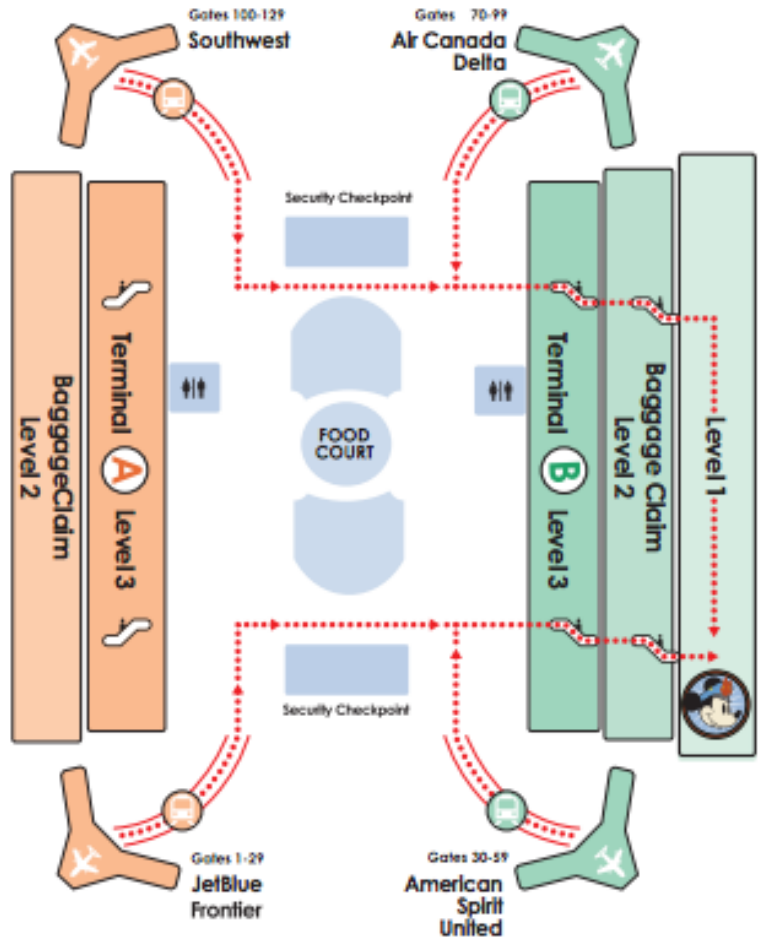
# AIRPORT TRANSFERS

## WHERE TO GET YOUR RIDE TO WALT DISNEY WORLD

Upon arrival at Orlando International Airport, you will need to collect your luggage from Baggage Claim and bring them with you to the shuttle welcome desk. Transportation check-in desks are located on **Side B, level 1**. Here is an image of the airport to help you get orientated.

There will be signs around to help you locate your transportation.

For your return to the airport, your scheduled pickup time is usually about 3 hours before your scheduled flight time.



1. Upon arrival, take the tram to the main terminal. (Just follow the crowd).
2. Collect your bags from baggage claim. (Baggage Claim is level 2)
3. Go to **SIDE B, LEVEL 1** (Ground transportation/rental car level)
4. Follow signs for your provider. If taking a private shuttle, your driver should be waiting for you near baggage claim.
5. Provide your resort confirmation number for boarding.

*Tip: Confirm you are schedule for return service while checking in with the transportation provider.*



# ONLINE CHECK-IN

## BYPASS FRONT DESK AND GO DIRECT TO YOUR ROOM



Disney World is encouraging all guests to use **online check-in** for your stay. It is quick, easy, and perhaps most importantly — contactless! You can do this on either Disney’s website or using the My Disney Experience app. Once you begin to check-in, Disney will ask you for your contact information so they may communicate with you via text. Now, you will be also be able to chat with Resort Cast Members via the My Disney Experience app.

### Direct-To-Room Service

Simplify your arrival by starting the check-in process online before your trip.

By using the Online Check-In service early, it will help Disney take your requests into account and plan ahead for your arrival. Use the My Disney Experience app to see real-time room ready updates.

### How does Direct-to-Room Service work?

Follow these simple steps to enjoy Direct-to-Room service at your Disney Resort hotel:

1. Link your Disney Resort hotel reservation to your Disney Account
2. Use the Online Check-In service prior to arrival
3. On your arrival day, use the My Disney Experience app to get real-time Resort reservation updates, including a notification when your room is ready

When you receive notice that your room is ready, simply use the My Disney Experience app to find your room and unlock your door with either your MagicBand or the Unlock Door feature on the app

### What If I Am Unable to Complete the Steps for the Direct-to-Room Service?

Cast Members are happy to assist with your arrival. Please see a Cast Member in the lobby entrance area or at the Front Desk.

### Who do I contact for help unlocking a door?

If you experience difficulties unlocking a door, get help from a Cast Member by tapping “Call Resort Hotel” on the Resort Hotel screen of the My Disney Experience app.



### Can I visit the Front Desk if I used the Direct-to-Room service?

Of course! Front Desk Cast Members are delighted to assist you with questions about your stay. Visit the Front Desk or tap “Front Desk” on your Disney Resort hotel room phone for personal assistance 24 hours a day.



# THINGS TO DO CHECK-IN/ CHECK OUT DAY

Perhaps you are arriving at Disney later in the day and don't have a full day to spend in the park, or if you have a later flight home, you may not want to spend the money on a full day theme park ticket. Here are some suggestions of things to do to make the most of every minute of your vacation.

## CHECK-IN DAY

**CHECK-IN TIME: 3:00 PM at all resort hotels, 4:00 PM at deluxe villas.**

Depending on your arrival time, you can certainly go to a park. If your room is not ready, Bell Services at the resort will be happy to hold your bags until it is. Here are some afternoon activities and evening entertainment to kick off your vacation:



- Go to a character dinner or dinner show
- Head to Disney Springs. You can go bowling at Splitsville Lanes or take get a head start on souvenir shopping

- See the energetic Cirque De Soleil show at Disney Springs
- Have an evening cocktails at one of the Monorail resorts and watch the Electric Water Pageant. It's one of those little "Easter Eggs" that Disney offers and most people don't even know exist.
- Attend and After Hours Special Ticketed Event.
- Get to bed early so you can get an early start and be at the park before it opens. Rope drop is the best time to get on the most popular rides with the least wait.

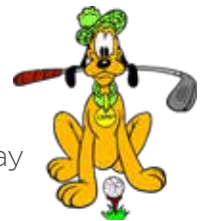


## CHECK-OUT DAY

**CHECK-OUT TIME: 11:00 AM**

If you have a late or mid-day flight, you can still get in some last minute Disney fun before your vacation ends. Your resort will hold your bags while you enjoy your day. Here are some suggestions, depending on how much time you have to spend:

- Enjoy a character breakfast
- Relax by the resort pool
- Play a round of mini golf (Also good to do on check-in day as they stay open late)
- Go to Typhoon Lagoon or Blizzard Beach water park. There are showers to freshen up before your return trip.
- Head to Fort Wilderness Tri-Circle-D ranch. There you can go for a carriage, horseback ride, or more
- Take an morning bass fishing excursion on Seven Seas Lagoon
- Go Downtown Disney for last minute souvenirs
- Get a spa treatment so you go home relaxed and refreshed



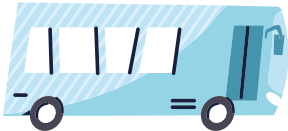


# TRANSPORTATION

## GETTING AROUND THE WALT DISNEY WORLD

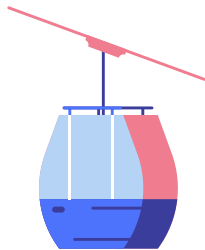
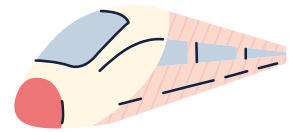
When it comes to getting around the Walt Disney World Resort, complimentary transportation is available to all. Give yourself plenty of time to get from Point A to Point B, keeping in mind that the ride itself may not take long but the wait for your ride may. Allow yourself 60 minutes when initially planning.

If you are in a real hurry, you can always get an Uber or Lyft. They are also one of the best ways to get to Universal Studios if you plan to visit that theme park.



**Disney Buses** serve ALL resorts, theme parks, water parks and Disney Springs. Buses begin running approx. 45 MIN PRIOR to Parks opening and 1 HOUR after the latest park closes.

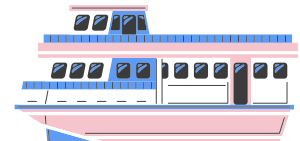
**The Disney Monorail** stops at Disney's Polynesian Village Resort, The Contemporary Resort, The Grand Floridian Resort, and the Ticket & Transportation Center. It will take you to Magic Kingdom and EPCOT, Magic Kingdom,



**Disney's Skyliner** is the newest form of transportation at the Walt Disney World Resort. This services Disney's Hollywood Studios and EPCOT from 4 Disney resorts; Caribbean Beach Resort, Riviera, Art of Animation, Pop Century.

**Boat transportation** is available throughout Walt Disney World at select resorts.

- To Magic Kingdom from Disney's Contemporary Resort, The Grand Floridian, Polynesian Village, Wilderness Lodge, and Fort Wilderness
- To Epcot and Hollywood Studios from Disney's Boardwalk, Beach Club, Yacht Club, WDW Swan and Dolphin Resorts
- To Disney Springs from Disney's Saratoga Springs, Port Orleans, and Old Key West



If you have any questions as to which is the best way to get you to your destination, I can offer tips. Your Disney resort concierge will also be there to help you get to where you are going.





**DISNEY GENIE**  
COMPLIMENTARY SERVICE

<p>PERSONALIZED ITINERARIES &amp; TIP BOARD</p> <p>ATTRACTIONS STATUS</p> <p>SHOWTIMES</p> <p>DINING AVAILABILITY</p> <p>STANDBY WAIT TIMES</p>	FORECASTED FUTURE WAIT TIMES	VIRTUAL ASSISTANT
	RESTAURANT WAIT LIST, CHECK-IN, & RESERVATIONS	
	MOBILE ORDER	ATTRACTION VIRTUAL QUEUES

<p>\$15 per person per day</p> <p>40 Available attractions</p>	<p><b>DISNEY GENIE+</b> AVAILABLE FOR PURCHASE</p> <p><b>Lightning Lane</b> MULTIPLE EXPERIENCES</p> <p> WALT DISNEY WORLD RESORT DISNEY PHOTOPASS AR LENSES</p> <p> AUDIO EXPERIENCES</p>	<p><b>INDIVIDUAL ATTRACTIONS</b> AVAILABLE FOR PURCHASE</p> <p> <b>Lightning Lane</b> SELECT EXPERIENCES</p>	<p>Price varies by date, attraction, and park</p> <p>Limited to 2 attractions per day</p>
--	--	--	---

For more information, refer to your WDW Vacation Planner (sent to you when you booked your vacation).

**To add Disney Genie+ to your Walt Disney World vacation package, contact your Destination Magic Travel Planner.**



# DISNEY GENIE+ LIGHTNING LANES

## HOW IT WORKS:

Using Disney Genie+ to access Lightning Lanes only takes a few steps. But first, make sure you have the **latest My Disney Experience app** downloaded. If you have previously downloaded it, check for updates. Then, before you begin, make sure you have set up the app to include everyone in your traveling party.



### SELECT

Review available Lightning Lane attractions and times and make your selection.

Disney Resort hotel guests, you can make your first selection as early as 7:00 AM ET.

(Guests at other resorts can make selections beginning park opening time).



### RIDE

When your time window opens, go to the attraction and enter via the "Lightning Lane" entrance.

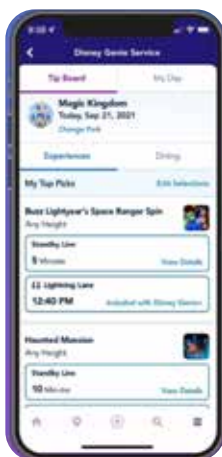
You will have to scan in with your device (smartphone, Apple watch, Magic Band, or Key to the World card)



### REPEAT

TIP: Once you have scanned through, you can then make your next Lightning Lane selection

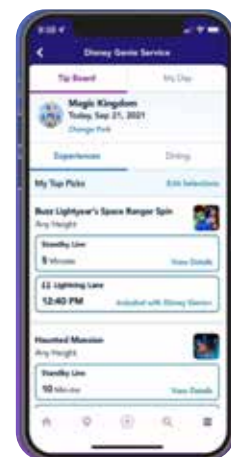
**Individual Attraction Selections** works the same except there will be an additional charge for those selections.



### PRICE:

Disney Genie+ is currently \$15 per person, per day.

Individual Attraction Selection prices vary by date and attraction. You do not need to purchase Genie+ in order to purchase Individual Attraction Selections.



**To add Disney Genie+ to your Walt Disney World vacation package, contact your Destination Magic Travel Planner.**



**DON'T MISS OUT**  
ON THESE GREAT ADDITIONS TO YOUR VACATION!

**SAVE \$\$\$**  
**ORDER AT LEAST 3 DAYS**  
**PRIOR TO ARRIVAL.**



**Get your Disney PhotoPass photos, videos and included for one price!**

**MEMORY MAKER INCLUDES:**

- Digital downloads of your Disney PhotoPass photos and videos
- Select attraction photos and videos
- Iconic, professional photos taken by Disney PhotoPass photographers
- Magic Shots - featuring Disney characters and more, added to your photos

**HOW DOES MEMORY MAKER WORK?**

**1. We Take Your Picture**

Disney PhotoPass Photographers take your photo in iconic locations—plus lots more.

**2. You View Your Photos**

Your MagicBand, PhotoPass card or personal QR code links your photos to your Disney account.

**3. You Download Them**

Get downloads of your Disney PhotoPass photos and videos for one price.





# TIPS

## FOR A MAGICAL VACATION

### MANAGING CROWDS

- Take advantage of **Early Theme Park Entry**. All Disney Resort guests will be allowed to enter 30 minutes earlier than other guests. Guests staying at Disney Deluxe Resorts will get **Additional Park Hours** on select evenings at select parks on select dates.
- Regardless of Early Theme Park Entry, we suggest arriving 45-60 minutes before scheduled opening times. Midday sees the highest crowds, so we suggest taking any lunch break or rest period at this point. Crowds normally diminish later in the afternoon.
- You will often find the longest lines (to enter parks and attractions) towards the middle. Seek out shorter lines furthest to the sides.
- If you don't mind splitting up your group, **single-rider lines** tend to have much shorter wait times. These rides include Test Track, Expedition Everest, and Rock 'n' Roller Coaster.
- Magic Kingdom is usually less crowded midweek.
- Lines close at official park closing time. However, the park stays open for at least one more hour. Therefore, plan to get in line before the park "closes" and you will be safe to ride an attraction past the official park closing time.
- Upgrade your theme park tickets to include **Disney Genie+** so that you can access Lightning Lanes on over 40 attractions.
- Many stores remain open after rides close, so you can do your souvenir shopping before leaving the park.

### SAVING MONEY

- You can use Disney gift cards to pay for anything including your resort tab. You can purchase them at a discounted rate at Target (using Target Red Card), at Sam's Club, and BJ's Warehouse.
- Check your receipts for coupons. For example, Magic Kingdom Quick Service restaurant receipts often include a 10% off coupon for Disney Springs merchandise.
- All Disney parks allow you to get free water at counter service restaurants.
- Uber and Lyft are cheaper than using a local taxi service.
- Visit one of the Disney's Character Warehouse outlet to purchase discontinued and discounted Disney merchandise. Locations are on Vineland Ave. and International Drive.
- Purchasing items like ponchos, reusable water bottles, glow sticks, Disney luggage, and souvenirs before you head to Disney World will save you money and time. Items are often not cheap at Disney, so arriving prepared can save you cash.
- Order bottled water, snacks, toiletries, etc. on Amazon.com, then have them shipped directly to your hotel. This can save you money and time spent shopping during your Disney vacation. Plus, you won't have to pack these items in your luggage. Be aware that Disney charges a \$6 delivery fee per package.



### ULTIMATE WAY TO AVOID THE CROWD

**Be treated like a VIP with a Disney VIP Tour!** You and your party will get the red carpet treatment throughout the parks. You'll get to skip the long lines and may even get a glimpse backstage. Tours are a minimum of 7 hours and prices start at \$425 per hour for groups up to 10 guests. **Contact us soon as tours book quickly.**



# TIPS FOR A MAGICAL VACATION

## DINING TIPS

- If you have trouble finding availability for Disney Springs restaurants, check OpenTable for additional reservation times, or call the restaurant directly.



- An 8:00 am or earlier breakfast reservation in the park will have you set up to get on rides right at park opening.
- Most dining reservations may be canceled (without penalty) 24 hours or more prior to your reservation.

## MORE TIPS

- Walt Disney World offers free wi-fi internet in their theme parks and resort hotels.
- One of the most important yet often overlooked Disney World tips and tricks. Wear comfortable shoes. Between walking to attractions and waiting in lines, you will be on your feet for most of the day. The average person walks 7-10 miles a day at Disney World.
- When you park your car, make note of the location. It may be helpful to snap a photo of this location with your phone.
- If your child isn't tall enough to go on a particular ride, use the "Child Swap/Rider Switch" program.
- We think some rides are more fun at night, including Expedition Everest and Big Thunder Mountain Railroad.
- Keep an external phone charger in your



daypack. You will likely use your cell phone throughout the day, so having a charger handy will prevent cell phone frustrations later in the afternoon.



- If you are staying on-site and purchase a souvenir and don't want to carry it around with you all day, use the Disney package delivery service. Your package will be delivered directly to your hotel room.
- If you stay at an on-site Disney World resort and want to rent a car (to get to Universal, a beach, or elsewhere else), you have a couple of options. Alamo and National both have on-site offices at the Disney World Car Center. Call 407-824-3470 and a shuttle will pick you up and take you to your rental car. You can also take a ride share service like Uber or Lyft. **(Your Disney Travel Planner can arrange for your rental car)**
- There is so much to see and do in Walt Disney World that you will likely not get to see and do it all in this trip—and that's ok. That is why so many people go back to Disney again and again.
- Disney World resorts typically give their guests folders with **Bounce Back Offers** and promotions. Use these discounts when booking your next Disney trip. For some of these benefits, you **MUST** book before you leave. **Please list us as your travel agent** so we can help you plan your next vacation!

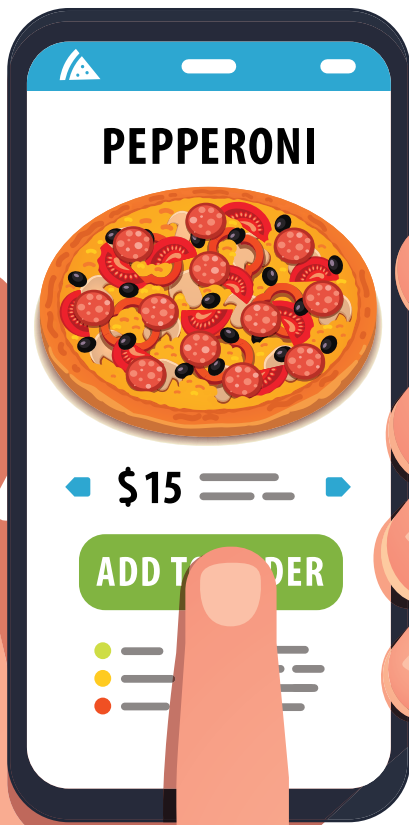


### THE MOST IMPORTANT TIP

**Have fun!** Walt Disney World is a very large resort and entertainment destination. It can be hot, it can be crowded, and it can be expensive. But it is also magical and memorable. The most important thing is to relax and enjoy your time with your family.

# Disney Mobile Ordering Made Easy!

Remember to Download the My Disney Experience Mobile app!



## Step 1: Place your order

1. In your My Disney Experience App, begin by selecting “+” and then choose “**Order Food.**”
2. Pick an available restaurant, select your arrival time and then make your selections. You can even customize certain menu items to your taste.
3. After you’ve reviewed your details, pay for your order using a credit card, debit card, Disney Gift Card, Disney Rewards Redemption Card, or Apple Pay.

## Step 2: Show up and check in

1. Head to the restaurant during your designated arrival time.
2. When you arrive, select the “**I’m Here, Prepare My Order**” button so the kitchen can begin making your order.

## Step 3: Pick up your order

1. You’ll receive a notification from the app when your food is ready to retrieve at the counter!
2. Look for the “**Mobile Order Pick Up**” sign.

Mobile order pick-up times can fill up, so if you plan to eat during peak meal times, try starting your mobile order ahead of time.



# Disney Pin Trading

**A great way to share the magic and bring home wonderful Disney memories**

## WHAT IS DISNEY PIN TRADING?

Disney Pin Trading is an exciting, interactive experience where our Guests can trade Disney pins with our Disney Cast Members and other Guests. It's fun for the whole family and creates cherished "pin pals" to last a lifetime! Start a new collection or exchange pins for the ones you've always wanted.

## HOW CAN I EXPERIENCE THE MAGIC?

It's simple and fun! Just locate a Cast Member wearing a lanyard with Disney pins and find a pin you'd like. Then present another Disney pin to the Cast Member in trade. Bringing home the magic is that simple. You can also trade with other guests.

## "THE TRADING TRADITION"

Disney has always offered collectible Disney pins in each of its parks, but with the kickoff of the Millennium Celebration in October 1999 at Walt Disney World, we began a new tradition of Disney Pin Trading. Now thousands of Guests trade each day with our Cast Members as well as other Guests throughout the parks and resorts. Like sharing Disney stories with your children and grandchildren, sharing pins is a delightful tradition for each generation. Mark the beginning of the century with pins you love and memories you'll treasure.

## WHICH ONES SHOULD I COLLECT OR TRADE?

The fun of Disney Pin Trading is in the amazing variety. Find YOUR FAVORITE pins to personalize your Disney experience. Guests of all ages can hunt for favorite characters, attractions and features. Whether it's the Little Mermaid or Mickey Mouse you seek, pin hunting is guaranteed to add thrills to your Disney adventure. Go find the pins you want and make some new friends! It is all up to you! Have fun!

## CAN I PURCHASE PINS?

Yes! You can find pins to add to your collection at any Disney gift shop.

- Counterfeit pins will not be accepted for trading. If there is any doubt as to whether a pin is tradable, the trading Cast Member shall make the final decision.
- For safety, the pins must have the back attached.
- Pins should be in good, undamaged condition.

**WARNING: Pins are not suitable for children under 3 years old. Pins contain small parts which may pose a choking hazard.**

# Must Haves for Your Disney Park Bag

## Portable Charger and/or USB cord

There are not many places to recharge your phone but there are some.

## Sunglasses and/or a Hat

The sun is strong.

## Sunscreen

You need to apply is more than once-a-day.

## Lip Balm, (preferably with SPF)

For extra sun protection.

## Pain Reliever

You will be doing a lot of walking.

## Band-aids and/or Blister Protection

Because accidents happen.

## Hand Sanitizer

A must have.

## Rain Jacket or Poncho

There are often short showers in Florida.

## Portable umbrella

If the forecast is rain all day, you may want extra protection.

## Water bottle

It's important to keep hydrated.

## Sweater or light jacket

If you are visiting in the summer, you may need a sweater for air conditioned rides or restaurants, or cool evenings.

## Leave some extra room in your bag for snacks and souvenirs



All bags will be inspected upon park entry.

Lockers are available near the entrance.

### Things You Can NOT Bring

Here is a partial list of items that are not allowed in Disney parks:

- Selfie sticks
- Tripods
- Glass containers (except small baby food jars)
- Strollers larger than 31" x 52"
- Wagons
- Inline skates
- Drones or remote control toys
- Firearms, including toys that look like weapons

For a current list of you can not bring into the park, visit <https://disneyworld.disney.go.com/park-rules/>





# COVID 19 WHAT TO EXPECT NOW



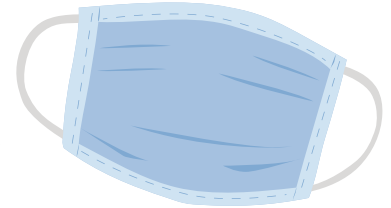
Rooms are thoroughly cleaned prior to check in. Floors are steamed/vacuumed. High touch items are wiped & bagged



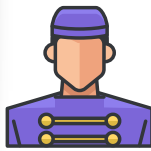
Light cleaning is done every other day which includes removal & replacing of towels & amenities.

Counter/surfaces wiped & trash is removed.

Need anything else...call housekeeping from your room phone.



**Go to Disney's Know Before You Go page of the latest face covering policy**



## Bell Services

You can still have your luggage held at Bell Services. If you want it delivered to your room, you **MUST BE PRESENT**. You can also have grocery deliveries held but perishable food **WILL NOT** be transferred during a split stay.

**Bye bye FP+  
Hello Disney  
Genie+**



**PARK TICKETS DO NOT GUARANTEE PARK ENTRY  
YOU MUST MAKE PARK PASS RESERVATIONS**



## MORE WALT DISNEY WORLD TIPS & TRICKS

Always ask PhotoPass photographers if they have a Magic Shot Available

Character Cavalcades & Flotillas now have their times listed in your MDE App

Get you spot for fireworks **AT LEAST 1 HOUR** ahead of time. Have one adult hold the spot while the other is the "runner" for snacks & potty breaks

Pack a poncho, portable charger and a water bottle in your park bag

Save your receipts...should something break, or you change your mind, you can always return it

Lockers are available for rental at the front of most parks. You can open and close them as many times as you need throughout the day

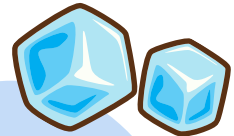
When you start your day, go **LEFT. EVERYONE** goes **RIGHT**



## MORE WALT DISNEY WORLD TIPS & TRICKS



**Order water & snacks & booze, especially breakfast & night time items, to be delivered to your resort. Try Garden Grocer or Amazon. Bell Services will store them if they arrive before you do. Then you will have snacks on hand and can pack a few in your park bag**



**Ice Water is FREE at most QS dining locations. Bring your own bottle and fill up as you need.**

**Place your Mobile Order before you're actually ready to eat. PICK UP times go FAST at popular restaurants. Then when you're ready to eat, hit "I'm Here" & BAM LESS WAIT TIME!**



**If eating at a QS restaurant at your resort, place your Mobile Order and click "I'M HERE" as you walk out of your room. Your food should be ready by the time you walk in....NO WAITING!**

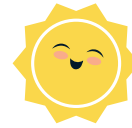




## MORE WALT DISNEY WORLD TIPS & TRICKS



### MORNING ADVICE



#### TAKE ADVANTAGE OF ROPE DROP

Rope Drop is when you arrive to the parks 45 min to 1 hour BEFORE the scheduled park opening. Guests are allowed into the park early to walk around, grab a quick bite, and head in the direction they plan to start their day. A rope will be dropped, generally before park opening, and you are able to start riding those rides. I have gotten 2 rides in before the park officially opens!



### EVENING ADVICE



#### TAKE ADVANTAGE OF LESS CROWDS

After an afternoon break, return to whatever park is open the latest. Crowds generally thin out as the evening sets in and wait times drop down. The parks are spectacular with everything aglow! Some rides are even BETTER at night. Keep an eye on your time, as long as you are in line 1 min before the park officially closes, you can still ride. Then take advantage of an empty park as you slowly make your way out



## MORE WALT DISNEY WORLD TIPS & TRICKS



**Refillable Resort  
Mugs**  
ranges from \$20-\$30

★ Mugs can **ONLY** be **REFILLED** at Disney Resorts, **NOT** at theme parks...that doesn't mean you can't use them



**Refillable Popcorn  
Buckets**  
ranges from \$10-\$25  
Refill is \$2



★ Buckets can be purchased & refilled throughout all 4 theme parks, water parks, & Disney Springs





## MORE WALT DISNEY WORLD TIPS & TRICKS



# MAGIC KINGDOM



## Favorites

### Snacks

Egg Roll Cart- Outside of Adventureland when coming from the hub

Dole Whip-Aloha Isle-Adventureland

Cinnamon Roll- Gaston's Tavern-Fantasyland

### Quick Service

Cosmic Ray's Starlight Cafe-Tomorrowland

Pecos Bill's Tall Tale Inn & Cafe-Frontierland

Casey's Corner- Main Street USA

### Table Service

Cinderella's Royal Table- inside the castle

The Plaza Restaurant- Main Street USA

Crystal Palace- Main Street USA/Hub Area

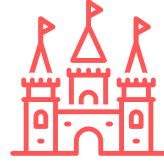
**RESERVATIONS CAN BE  
MADE 60 DAYS IN ADVANCE**



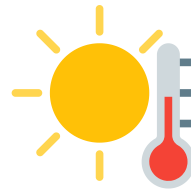
# MORE WALT DISNEY WORLD TIPS & TRICKS



## MAGIC KINGDOM



Are You.....  
**SLEEPY**



Are You...  
**HOT**

**CHECK OUT YOUR MAP & HEAD ON OVER TO ONE OF  
THESE ATTRACTION...WHICHEVER IS THE CLOSEST.**

### **TOMORROWLAND**

Carousel of Progress\*Monsters Inc, \*PeopleMover(only if it isn't a downpour, it does go outside)

### **FANTASYLAND**

Mickey's Philharmagic (3D)\*Under the Sea\*it's a small world\*Pete's Silly Sideshow

### **LIBERTY SQUARE**

Hall of President's

### **FRONTIERLAND**

Country Bear Jamboree

### **ADVENTURELAND**

Pirates of the Caribbean\*Enchanted Tiki Room

Is it....

**RAINY**





# MORE WALT DISNEY WORLD TIPS & TRICKS



## EPCOT



### Honorable Mentions

Saki Bar in Mitsukoshi Dept Store-Japan Pavilion	Club Cool in Future World *Try The Beverly
--	--

# Favorites

### Quick Service

*Sunshine Seasons-Land Pavilion  
Regal Eagle Smokehouse-American Pavilion-World Showcase  
Boulangerie Patisserie les Halles-France Pavilion-World Showcase*

### Snacks

*School Bread-Kringla Bakeri og Kafé-Norway Pavilion  
Churros-Snack Cart-Mexico Pavilion  
Caramel Corn-Karamel Kuche-Germany Pavilion  
ANYTHING form Boulangerie Patisserie les Halles*

### Table Service

*Le Cellier-Canada Pavilion  
Via Napoli Ristorante e Pizzeria-Italy Pavilion  
Biergarten Restaurant-Germany Pavilion*

**RESERVATIONS CAN BE MADE 60 DAYS IN ADVANCE**





## MORE WALT DISNEY WORLD TIPS & TRICKS



# EPCOT



**Epcot is FULL of great places to escape a rainy day, cool off, or let little ones run off some energy.**

**Future World** has Spaceship Earth, Journey Into Imagination, and The Seas with Nemo & Friends. We have waited out numerous rain storms inside The Seas!

Over in **World Showcase**, Frozen Ever After, the Gran Fiesta Tour and The American Adventure are all great attractions to cool off and recharge. I especially like The American Adventure...it's 20 minutes long!

Make sure you check out the EPCOT Experience, located in the Odyssey Pavilion. You can find this on your way from Test Track to Mexico. It showcase all of the amazing changes coming to EPCOT. It also has cool PhotoPass opportunities, a restroom and AC!

**BEST  
Fireworks  
Views**

*Bridge Between France & UK  
In front of Italy  
Between Norway  
& Mexico*

Don't overlook the fun dancing fountains over by the Imagination Pavilion





# MORE WALT DISNEY WORLD TIPS & TRICKS



## Hollywood Studios




**QUICK SERVICE**

- Woody's Lunchbox-Toy Story Land
- Ronto Roasters-Galaxy's Edge
- Docking Bay 7-Galaxy's Edge
- Backlot Express-Echo Lake
- Restaurantosaurus-Dino Land




**SNACKS**

- Anaheim Produce
- The Trolley Car Cafe
- Dinosaur Gerties

**Star Wars Fan?**  
Check out Oga's Cantina inside Galaxy's Edge. You do need a reservation but walk up's have been known to happen



**TABLE SERVICE**

- Sci Fi Dine-In Theater
- 50s Prime Time Cafe
- Hollywood & Vine
- Hollywood Brown Derby



**RESERVATIONS  
MADE 60 DAYS  
IN ADVANCE**





# MORE WALT DISNEY WORLD TIPS & TRICKS



## Hollywood Studios



**A MUST DO!**  
-Lily M.

**A PERFECT '10'**  
-Ed S.

 **GREAT "ESCAPES"**

STARRING:

VOYAGE OF THE LITTLE MERMAID  
 FROZEN SING-A-LONG  
 MUPPETVISION 3D  
 WALT DISNEY PRESENTS  
 TOY STORY MANIA



**This DID  
NOT  
disappoint!**  
-Shelley V.

**★★★★**  
-Stephanie D.

**Exactly what  
we needed**  
-Thomas P.



# MORE WALT DISNEY WORLD TIPS & TRICKS



## Animal Kingdom



### Quick Service



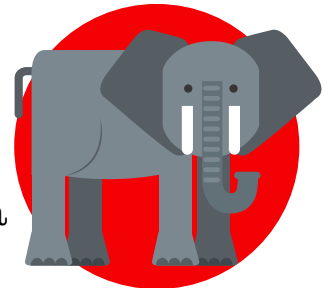
Harambe Market-Africa  
Satu'li Canteen-Pandora  
Flame Tree BBQ-Discovery Island

**FAVORITE EATS!!**

### Table Service



Tusker House-Africa  
Yak & Yeti Testaurant-Asia  
Tiffins-Discovery Island



### Snacks



Tamu Tamu- Dole Whips  
Zuri's Sweet Shop-Pastries  
Pongu Pongu-Pongu Lumpia



## MORE WALT DISNEY WORLD TIPS & TRICKS



# Animal Kingdom



## General Tips

**SEE PANDORA AT NIGHT. THE BIOLUMINESCENCE SPREADS THROUGHOUT THE LAND FROM THE PLANTS TO THE SIDEWALK,**

**FLIGHT OF PASSAGE CAN CAUSE MOTION SICKNESS IF YOU ARE PRONE TO IT.**

**IT'S TOUGH TO BE A BUG CAN BE A LITTLE SCARY, EVEN FOR ADULTS. SIT ON THE END IF YOU THINK YOU MAY NEED TO MAKE A QUICK GETAWAY. EXPERIENCES CAN INCLUDE THE FEELING OF BUGS CRAWLING, SMELLS, SPRITZES OF WATER AND LOUD NOISES.**

**RIDE KILIMANJARO SAFARIS EITHER IN THE MORNING, BEFORE 10:30AM, OR IN THE EVENING, AFTER 5PM. THE ANIMAL SEEMS TO BE MOST ACTIVE DURING THESE TIMES.**

**MAKE SURE YOU MAKE TIME TO RIDE THE WILDLIFE EXPRESS OVER TO RAFIKI'S PLANET WATCH. YOU GET TO SEE SOME UNIQUE BEHIND THE SCENES ON THE WAY OVER, YOU MAY JUST RECOGNIZE SOME BUILDINGS FROM A DISNY+ SHOW.**

**DO NOT MISS FESTIVAL OF THE LION KING**





## WALT DISNEY WORLD WITH TODDLERS IN TOW

Visiting Walt Disney World with littles can be both exciting and exhausting. Many amenities exist to help parents, and kids alike, to help keep the magic alive while visiting the theme parks.



Inside these care centers, you have the ability to buy ANY item you may have forgotten or run out of. From diapers and wipes to snacks & medicine. You will also have use of a diaper changing room, a private area to nurse and a microwave

## Baby Care Center Locations

**EPCOT: THE ODYSSEY PAVILION (BETWEEN MEXICO & TEST TRACK)**

**MAGIC KINGDOM: BETWEEN CASEY'S CORNER & CRYSTAL PALACE**

**WALT DISNEY WORLD RESORT: NEXT TO CREATURE COMFORTS (NEAR THE BRIDGE TO THE LAND)**

**HOLLYWOOD STUDIOS: NEAR GUEST RELATIONS AT FRONT OF THE PALETTE SHOP**

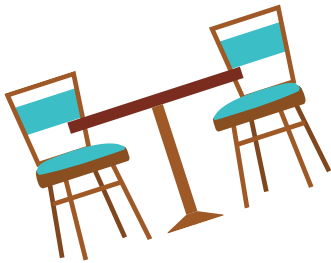




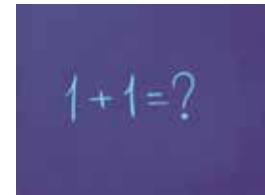
# WALT DISNEY WORLD WITH TODDLERS IN TOW



## Dining with Toddlers



When eating with toddlers, or a child under the age of 3, they do not need a park ticket but they DO need to be included in the total count when making reservations for a sit down (TS) dining location.



Kids under the age of 3yrs old can eat FREE at sit down dining locations that are all-you-can-eat family style or buffets. They are allowed to "share" a plate with Mom or Dad.



High Chairs can be requested at all dining locations

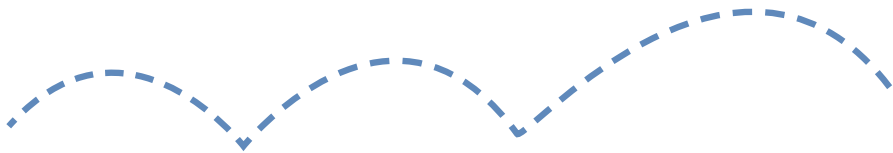


***TIP: If you aren't that hungry, adults can order off of the kids menu at quick service locations***

# Bounce Back IN-ROOM PROMOTION



For guests planning to return to the Walt Disney World Resort within a year's time, there could be a Tiggeriffic money saving promotion just under your nose!



The Walt Disney Travel Company wants to reward those guests “bouncing back” by offering an exclusive savings opportunity. Usually placed on a table, or at the foot of the bed inside your Disney resort room, you may find a flyer with the current Bounce Back offer. It is typically a generous room rate discount or may be a free Dining Plan offer.

There are 2 ways to take advantage of this offer:

1. Stop by the front desk or call the number on the flyer. Be sure to tell them to make the reservation under the name of your Destination Magic travel agent.
2. Contact your Destination Magic travel agent and they will be happy to take care of everything for you

**This offer MUST be booked prior to checking out of the resort for your current stay.**

A Bounce Back offer is a wonderful way to secure a great deal on a future vacation. It's just a \$200 deposit per room required to secure the reservation, (fully refundable up to final payment which is due 30 days prior to check-in). Plus, you still can modify resort or dates later (as long as they fall within the original offer parameters). It's a no-brainer for guests wishing to return to the magic sooner rather than later!

The look of the flyer may vary from season to season, but keep your eye out for literature in your resort room that resembles this pamphlet. If you don't see an offer or there is no booklet in your room, simply dial 8844 from your in-room telephone and ask about a special return rate offer.

*(Note, during 2020-2021 season, offers may be suspended due to Covid restrictions.)*



# PACKING LIST

## CLOTHES (Plan For Each Day)

- Seasonal Shirts
- Shorts & Pants
- Underwear
- Socks
- Comfortable Walking Shoes
- Sandal/Pool Shoes
- Bathing Suits
- Jacket/Sweatshirt (Seasonal)
- Dinner Attire  
(For Specialty Restaurants)
- Pajamas
- Gym Clothes
- Hat/Visor
- Sunglasses
- Accessories
- Costumes For Kids\*

## TOILETRIES

- Prescription Meds
- Pain Relievers
- Cold/Allergy Meds
- Mini First Aid Kit
- Bug Spray
- Sunscreen
- Shampoo/Conditioner
- Soap/Shower Gel
- Toothbrush
- Toothpaste
- Deodorant
- Lotion
- Hairbrush
- Hair Accessories
- Makeup
- Feminine Products
- Razors
- Lip Balm
- Glasses/Contact Lenses

### **\*Disney's costume policy**

*With the exception of Mickey's Not-So-Scary-Halloween Party, costumes are only permitted for children under the age of 13.*

## EXTRAS

- Chargers
- Camera
- Extra Memory Cards
- Laptop/Tablet
- Ponchos/Umbrella
- Autograph Book
- Sharpies (For Autographs)
- Mickey Ears
- Pennies & Quarters  
(For Souvenir Pennies)
- Books
- Deck Of Cards
- Extra Bag For Souvenirs
- Ziploc Bags
- Beach Bag
- Hand Sanitizer
- Snacks

## TRAVEL DOCS

- Identification/Drivers License
- Credit Cards/Cash
- Magic Bands/Tickets
- Airline Tickets
- Car Rental Info
- Hotel Confirmation
- Maps/Guidebooks
- Copy Of Itinerary

## BABY ITEMS

- Car Seat
- Stroller
- Baby Wipes
- Diapers/Swim Diapers
- Bibs
- Sippy Cups/Bottles
- Snacks & Containers
- Blankets & Stuffed Animals
- Sunscreen
- Baby Hat
- Games/Toys



## ADDITIONAL ITEMS

- \_\_\_\_\_
- \_\_\_\_\_
- \_\_\_\_\_
- \_\_\_\_\_
- \_\_\_\_\_
- \_\_\_\_\_
- \_\_\_\_\_
- \_\_\_\_\_
- \_\_\_\_\_
- \_\_\_\_\_

### **PACK LIGHT**

All resorts have laundry facilities. Consider washing your clothes so that you don't need to pack as much. Especially if you are trying. It will save you money to checked baggage fees.

### **PACK FOR THE WEATHER**

Summer is hot with frequent rain storms. Winter can be warm or cold. Check the forecast to be sure you pack accordingly.

### **CARRY-ON BAG**

Pack important items in your carry-on bag such as medicines, electronics/chargers, and travel documents. Plus don't forget your Magic Bands. Keep them in your carry-on bag, not checked luggage.



# BEFORE YOU LEAVE HOME

## TIPS FOR A HAPPIER RETURN



By following these suggestions, you can make sure that your amazing vacation isn't ruined by an unwelcome surprise lurking inside your front door.

### CLEAN:

---

#### CHANGE THE SHEETS

When you arrive home from your vacation, nothing beats collapsing into crisp, clean sheets... in your own bed. It's worth the few extra minutes it takes before you leave.

#### TAKE OUT THE TRASH

Nothing could be worse than arriving home to realize you forgot to take out the garbage! Not exactly the atmosphere you want to experience!

#### EMPTY OUT THE FRIDGE

Throw out any leftovers and offer any perishables that won't last to your family or friends. No sense wasting good food, plus you don't want to have to worry about it when you return.

### PROTECT:

---

#### LOCK ALL OF YOUR WINDOWS

It's easy to remember to lock the doors, but be sure all windows are shut tightly and locked. You don't want to come home to puddles of rainwater, or an unexpected intruder.

#### BE SURE SOMEONE HAS A KEY

Find a trusted family member or neighbor and ensure that they have a way in to your home or apartment in case of an emergency. You never know when it could come in handy.

#### EMAIL YOURSELF COPIES OF YOUR CREDIT CARDS, ID AND TRAVEL DOCUMENTS TO A WEB-BASED EMAIL ACCOUNT

Just in case something happens while you are traveling you can easily access all your important confirmations and details wherever you can get online. Remember to photocopy both sides of your credit cards and insurance cards.

### CONSERVE:

---

#### ADJUST THE THERMOSTAT

Be sure to set the air conditioning or heat to an appropriate level to save on energy costs while you are away. Also, you might consider turning down the hot water heater temp as well. You will be very glad you did when you receive next month's utility bills.

#### SET TIMERS

An inexpensive timer unit from any hardware store allows you to program your lights for security purposes (and energy conservation). Those home stalkers will think someone is home and pass you by.

#### UNPLUG!

Unplug any appliances that you can while you are gone (think toaster, coffee maker and office printer). They can be a fire hazard, as well as sucking precious electricity even while you are hundreds of miles away.